

# Dredger Belov Piatã

Suction Dredger Vessel

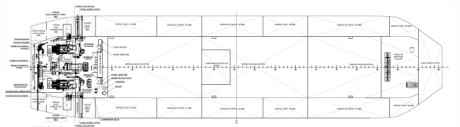
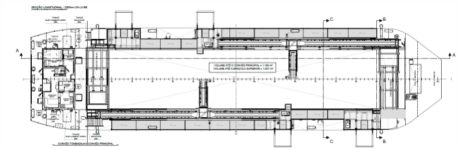
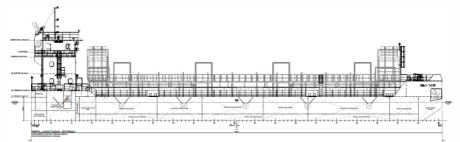
**BELOV**



Dredger **Belov Piatã** was launched in 2024. It has a load capacity of 1640 tons for a 3120 m<sup>3</sup>/h suction capacity distributed in 4 pumps and 4 A-frames. The dredger has a length of 66.45 m, a beam of 16.5 m and a draft of 2.94m. **Belov Piatã** was designed in 3D and has high quality finish: design and manufacture of custom furniture, high-strength materials and special lining panels.

## REGISTRATION

*Vessel Name:* BELOV Piatã  
*Builder:* BELOV Offshore Industrial Ltda  
*Type:* Dredger Vessel  
*Class:* RBNA  
*Year:* 2024  
*Flag:* Brazilian  
*Owner:* BELOV Obras Portuárias Ltda



## MAIN PARTICULARS

### DIMENSIONS

Length overall	66.45m
LBP	66.45m
Breadth moulded	16.50m
Depth	3.80m
Draft	2.94m
Frame spacing	0.66m
Deadweight	1.632 ton
Net tonnage	221 TAL
Gross tonnage	739 TAB

### CAPACITIES

Fuel oil	83,3m <sup>3</sup>
Fresh water*	44,8m <sup>3</sup>
Load volume capacity	1.827m <sup>3</sup>

### ACCOMMODATIONS

Accommodation for	12 pax
Cabins	5

1 mess room, laundry, galley, stores, control room, collective bathroom, change room.

Accommodations designed and constructed according to international standards set by classification societies, using high-strength materials and imported lining panels.

## OPERATION

### MACHINERY

Caterpillar generator (Main)	2 x 910 kW
Cummins generator (Auxiliar)	1 x 180 kW

### PERFORMANCE

Dredge pump	4 x 780m <sup>3</sup> /h
Load capacity	1.640 ton

## EQUIPMENT & ELETRONICS

### DECK EQUIPMENT

A-Frame	4 x 4.8 ton
Windlass	7.5t@ 9m/min
Capstan	2 x 5 ton
Anchor	2 x 1.195 Kg

### ALARM & MONITORING SYSTEM

AMS (MCA sets, open doors and compartments), equipments status and tank level indication, IHM Touch Screen (12 inches) and CCTV.

### GENERAL EQUIPMENT

Black water pump	1 x 5 m <sup>3</sup> /h
Gray water pump	1 x 5 m <sup>3</sup> /h
Ballast pump	2 x 130 m <sup>3</sup> /h
Bilge water separator	1 x 1 m <sup>3</sup> /h

### ELETRONICS

9Ghz Radar, GPS, Echo Sounder, fixed and portable VHF, AIS.

### SAFETY EQUIPMENT

Life raft: 1 x auto inflatable for 20 people each  
 Life vests: 17 x class 2  
 17 fire detection system units  
 Fire-fighting/black water pump 2 x 55 m<sup>3</sup>/h  
 Emergency fire-fighting pump 1 x 25 m<sup>3</sup>/h



**Front View**  
Operation Site



**Top View**  
Operation Site



**Starboard View**  
Operation Site



**Rear View**  
Operation Site



**Cargo Hold**  
Operation Site



**Wheel House View**  
Operation Site



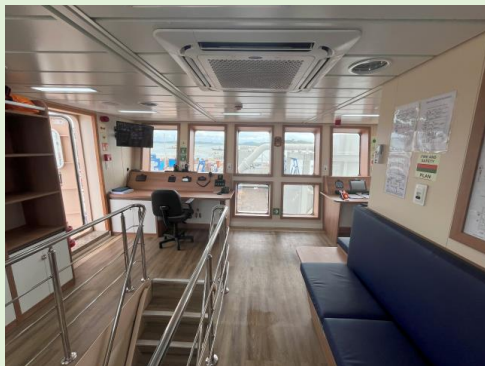
**Control Cabin**  
Wheel House



**Control Cabin**  
Wheel House



**Control Cabin**  
Wheel House



**Control Cabin**  
Wheel House



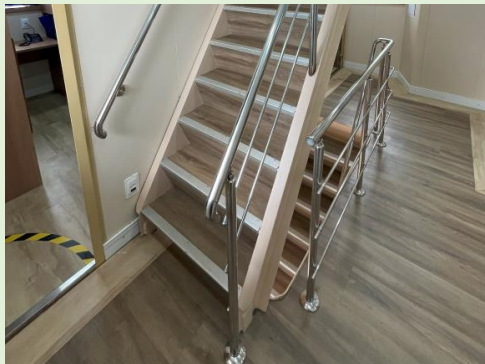
**Control Cabin**  
Wheel House



**Control Cabin**  
Wheel House



**Access Staircase**  
Upper Deck



**Access Staircase**  
Upper Deck



**Quadruple Accommodation**  
Upper Deck



**Quadruple Accommodation**  
Upper Deck



**Double Accommodation**  
Upper Deck



**Single Accommodation**  
Upper Deck



**Galley**  
Stern Deck



**Mess Room**  
Stern Deck



**Mess Room**  
Stern Deck



**Corridor**  
Stern Deck



**Corridor**  
Stern Deck



**Laundry Room**  
Stern Deck



**Fire and Black Water Pump**  
Engine Room



**Generator Set**  
Engine Room



**Main Electrical Panel 440V**  
Engine Room



**Operation Main Electrical Panel**  
Engine Room



**HPU**  
Engine Room



**Operation Cabin**  
Work Platform



[www.belov.com.br](http://www.belov.com.br)

**Matriz - Escritório Central**

Rua Quinta dos Lázarus, nº 50 - Quintas, Salvador - BA  
CEP: 40303-300  
Telefone: (71) 3416.1900

**Canteiro Marítimo de Mapele - CMM**

Rua do Túnel s/n, Mapele - Simões Filho - BA  
CEP :43727-050  
Telefone: (71) 3416.1970

**Base Macaé**

Avenida Nossa Senhora da Glória nº1181 - 4º andar - Praia Campista  
Macaé - RJ - CEP: 27923-215  
Telefone: (22) 2773.4023

**Base Guapimirim**

Estrada Martha Alcântara Fares nº3000, Lote 40, Bairro/Distrito Cotia  
Guapimirim - RJ - CEP: 25947-040  
Telefone: (21) 2632.4683

