

OTSV Belov Mares

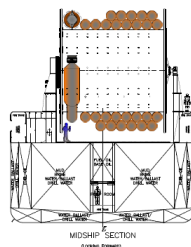
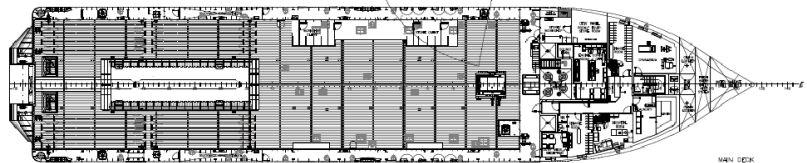
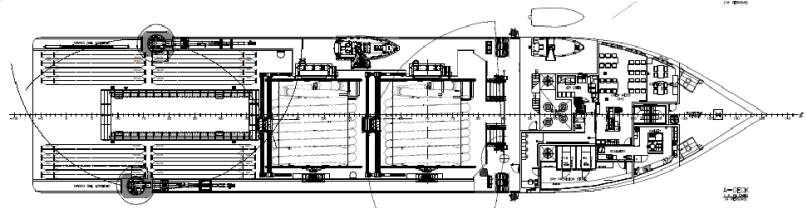
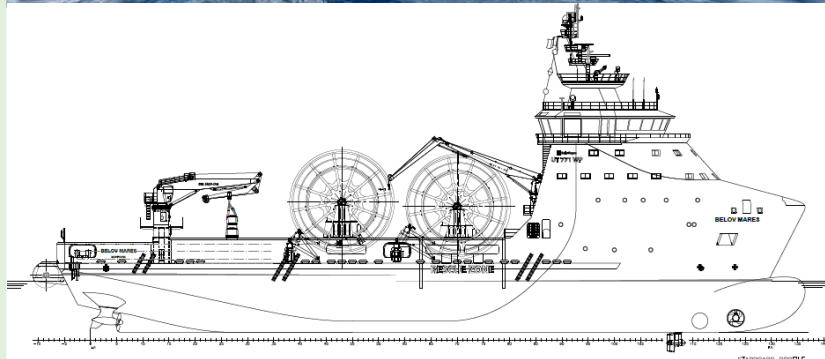
OCEANIC TERMINAL SUPPLY VESSEL



This OTSV is a Rolls-Royce design UT771 WP is a medium-sized offshore transfer supply vessel which undertakes supply duties between land bases and offshore installations. The model is designed for diesel electric medium or high-speed machinery and azipull propulsion system. The cargo deck area with two cranes, well protected and a deckload of 10 t/m².

REGISTRATION

Vessel Name: BELOV MARES
Builder: COSCO SHIPPING HEAVY INDUSTRY (GUANGDONG) CO, LTD
Type: DP-2, UT771 WP OTSV).
Class: RINA. Offshore Supply vessel; unrestricted navigation
Date of build: 2022 / Flag: BRAZIL
Owner: BELOV ENGENHARIA S.A.





MAIN PARTICULARS

DIMENSIONS

Length overall:	88,45 m
Breadth moulded:	18,00 m
Depth:	7,80 m
Summer Draft:	5,80 m
Deadweight:	2998 T
Net tonnage:	1299
Gross tonnage:	4202

CAPACITIES

Deck capacity:	10.0 t/m2
Fuel oil :	600m3
Fresh water*:	322m3

Diesel oil filtration systemAlpha with CJC separator

*Includes redundant fresh water generators (reverse osmosis).

ACCOMMODATIONS

Accommodation for:	46 pax
Cabins:	45
Hospital:	1
2 mess rooms, laundry, galley, stores, CCM, 2 offices, change room, Gym.	

EXTRA RESOURCES

Offloading hose line flushing/ pressure test system.....	flow 500m3/h
Inerting system (Nitrogen).....	pressure 5kgf/cm2 and volume 80m3

MACHINERY / PERFORMANCE

PROPULSION - MACHINERY

Main generators:	2x 1480 kW
Main generators:	2x 990 kW
Emergency generator:	1 x 250 kW
Main Propeler:	2 x 1600 kW
Bow tunnel thruster:	1 x 790 kW
Azimuth thruster	1 x 725 kW

PERFORMANCE

Trial speed :	13 knots
Economic speed:	10 to 13 knots

REMARK: Vessel is diesel-electric

DECK EQUIPMENT

1 x Cylinder Luffing knuckle Jib Crane, Model GPK 115-3-16

Lifting capacity:	3 T
Working radius MAX:	16 m
Working radius MIN:	2.1 m
Lifting speed with SWL:	10 m/min
Lifting speed Light load	10 m/min
Lifting height	40 m
Luffing time:	80 sec
Slewing sector:	360°Unlimited
Slewing speed:	0.6 rpm
Heel + trim conditions:	5°/ 2°
Weight of crane:	8.4 T

2 x Hydraulic Knuckle Boom Marine Crane, Model DMW-10T17M-KB

Lifting capacity :	10t at 17 m
Minimum working radius:	3m
Maximum working radius:	17m
Hoisting height:	40m
Hoisting speed :	0~12m/min
Slewing speed:	0.7r/min
Slewing range:	360°
First luffing time:	90sec
Second luffing time:	75sec

Strauss Hydraulic Work Winch

Traction Capacity.....	100 tf
Cable Diam.....	97mm
Cable Capacity.....	500 m
Nominal Speed.....	0 - 9 M/Min

2 x Rope storage Winch

Nominal Speed.....	0 - 15 M/Min
Rope Capacity Ø97mm.....	500m
Brake Capacity.....	8ton
Rotation.....	right/left
Command.....	local
Drive.....	Electric
Work Power.....	40cv

2 x Offloading Hose Reel with spooling gear

Static Brake Capacity.....	70 ton
Dynamic Traction Capacity on First Layer	50 ton @ 13m/min
Dynamic Brake Capacity in First Layer	60 ton @ 52m/min
Hose Capacity...400m - 20" Double Carcass Floating Hose with 20" HEV	

2 x Deck Capstan

10 tonnes' pull.....	at 0 - 12 m/min.
Light line	at 0 - 14 m/min.

2 x Tugger Winch

10 tonnes' pull	at 0 - 19 m/min.
Slack rope	at 0 - 73 m/min.
Lowering speed	at 0 - 75 m/min.

2 x Stern Winch EKRON

15 tonnes' pull.....	at first layer
10 tonnes' pull.....	at last layer

Crude Oil Recover area (16 m x 4 m)

Capacity	200 m3
Discharge flow rate	250 m3/h at 40 mca
Drainage flow rate	200 m3/h

Offloading Hose Storage area

Capacity2 piles DN 20 inches at each board side

Two combined Karm Fork & Towingpins

Safe Work Load 160 t.

Particulars may change without previous notice.



EQUIPMENT & ELECTRONICS

SAFETY EQUIPMENT

Life raft:6 x Self-inflating for 25 persons each
 Life vests:55 x class II

1 x Rescue Boat and Davit System Palfinger

FRB 610 60HP
 Type : Fast rescue boat
 Building Material : GRP (Glass fiber Reinforced Polyester)
 Capacity (max. FRB) : 8 persons
 Loa x Boa x H : 6.10m x 2.20m x 2.28m
 Boarding position : Inboard
 Safe Working Load (SWL) : 1800 kg
 Trim / list conditions : 10° / 20°
 Std. lowering height : 19 m (at 0° / 0°)
 Max. lowering / hoisting speed : Hydraulically 18 m/min

1 x Work Boat and Davit System Viking

Magnum-750 MKII
 Type : Fast rescue boat
 Building Material : GRP (Glass fiber Reinforced Polyester)
 Capacity (max. FRB) : 15 persons
 Loa x Boa x H : 7.70m x 2.90m x 2.85m
 Boarding position Inboard / Outboard on deck level
 Safe Working Load (SWL) 4000 kg
 Trim / list conditions 10° / 20°
 Max. lowering height 43 m (including 10°/20° trim/list condition)
 Min. hoisting speed Hydraulically 18 m/min

SEA CONDITIONS MEASUREMENT INSTRUMENTS

Valeport 106 portable current meter1 x 50 m depth
 Wave Height Measurement 1 x WS-PD Atlantec Drakkar

ELECTRONICS / NAVIGATION EQUIPMENT

AIS:1x Furuno FA-170
 Auto Pilot:1x Raytheon NAUTOPILOT 5100
 DGPS: 2x Furuno GP-170
 Echo Sounder:1x Furuno FE-800
 ECIDS:1x Furuno FMD 3300
 EPIRB: 2x Jotron TRON 60GPS
 GYRO: 3x Raytheon Digital Gyro STD 22
 GMDSS Radio Console:1x Furuno RC-1800T
 GMDSS VHF: 2x Furuno VHF FM-8900S
 TWO-WAY VHF: 3x Mcmurdo R5
 GSM:1x Terminal 2N EasyGate Fax
 HF/MF/SSB:1x Furuno FS-1575
 Inmarsat-C:1x Furuno FELCOM 18
 Magnetic Compass: CASSEN E PLATH BBC180
 Odometer:1x Furuno DS-80
 RADAR: 2x X Band Furuno FAR-3320 / S Band FAR-3330S
 SART: 2x Mcmurdo S5
 InterCom System: 1x MPA1600 & LOUDHAILER & ICS6200 PA/GA System & Loudhailer System & Auto
 SSAS:1x Furuno FELCOM 18
 PORTABLE VHF: 3x ICON/ IC- M73
 VDR 1x Furuno VR7000
 PORTABLE UHF: 4x ICON F4032T
 DMC:1x ICON IC350
 MARINE VHF:1x ICON/ IC- M200
 FIXED UHF: 5x Motorola GM338
 PORTABLE UHF: 2x Entel HT583
 TELEGRAPH: 1x Rolls Royce MT1-144
 Whistle: 1x Zöllner Makrofon M75F
 Anti-roll system 1 x Hoppe Marine

DYNAMIC POSITIONING SYSTEM

1 Rolls Royce DP system (class 2) comprising:
 - 2 DGNSS (combined GLONASS and DGPS), including Follow target function, motion prediction and DP capability analysis functions.
 - 2 Cyscan
 - 2 UPS
 - 3 VRU-PD, 3 wind sensor
 - 3 Gyrocompass

ALARM & MONITORING SYSTEM

1 Rolls Royce ACON IAS MU system control: Main engines, propellers and thrusters, UPS

CCTV

CCTV system covering:
 Deck, wheelhouse, engine room, bridge and engine room control

Particulars may change without previous notice.