

# BELOV SHIPYARD

EXCELLENCE IN NAVAL CONSTRUCTION



 **BELOV**



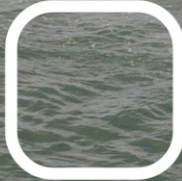
# HEAVY METAL STRUCTURES

- ✓ Construction of Topside Modules for Offshore Production Units
- ✓ International Certifications
- ✓ Various Heavy Constructions
- ✓ Load-out Pier Rated for 2000 Ton
- ✓ Sea Transportation
- ✓ Jackets





# PORT AND COASTAL SUPPORT VESSELS



- Tugs ✓
- Service Vessels ✓
- Vessel Launching with Slipways ✓  
or Floating Dry Dock
- Construction in Steel ✓  
or Aluminum
- Various Barges ✓

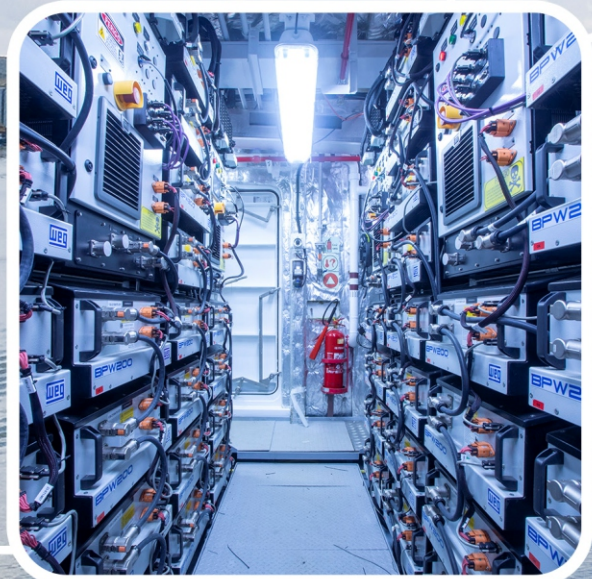


# RIVER NAVIGATION



Awarded as **2023**  
**Best Medium Pusher Tug**  
By Work Boat World

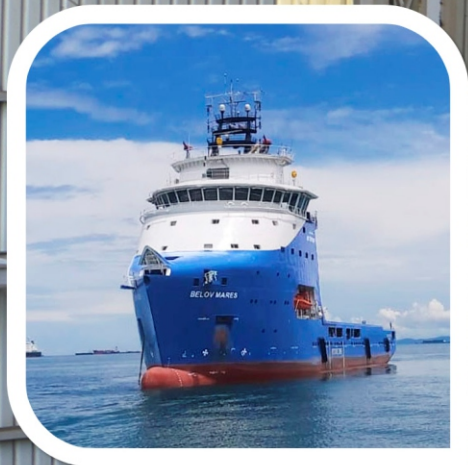




- Long Ranger Pushers ✓
- Diesel, Diesel-electric, Hybrid or Electric Propulsion ✓
- High-quality Internal Finishing, Bringing Comfort to Crew ✓
- Bulk Barges, "Roll-on And Roll-off" ✓



# OFFSHORE SUPPORT VESSELS





BELOV HUMAITÁ



Awarded a **2020**  
Significant Small Ship  
By RINA



Vessels with DP-1 and DP-2 ✓

Certified Vessels ✓

Design Details ✓

High Standard Details ✓

Vessel Launching with Floating Dry Dock ✓

Construction in Steel or Aluminum ✓



# OFFSHORE VESSEL CONVERSION



- ✓ Integration of Mechanical, Hydraulic and Pneumatic Systems
- ✓ Updating and Integration of Electrical, Automation and Control Systems
- ✓ Adequacy to Adhere to Brazilian and Classification Society Standards
- ✓ Heavy Steel Work, Piping, High Pressure Piping
- ✓ Installation of Sensitive Equipment
- ✓ Large Precision Machining

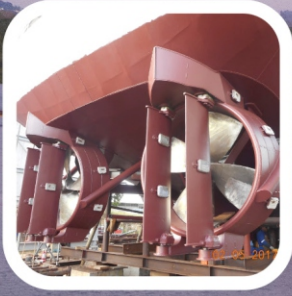




BELOV MARES



# REPAIR AND DECOMMISSIONING SHIPYARD



- ✓ Decommissioning of Fixed and Floating Vessels and Platforms
- ✓ Dry Docking Up to 2200 Ton
- ✓ Repair and Structural Reinforcement in Steel or Aluminum
- ✓ Floating Vessel Repairs
- ✓ Harbor for Service Vessels
- ✓ Proven Experience
- ✓ General Maintenance
- ✓ Painting



EXTERNAL PROFILE



## Our compromise

To be recognized nationally and internationally as a provider of world-class shipbuilding and repair services, focusing on customer demands and striving to meet deadlines with quality, fair prices and safety.

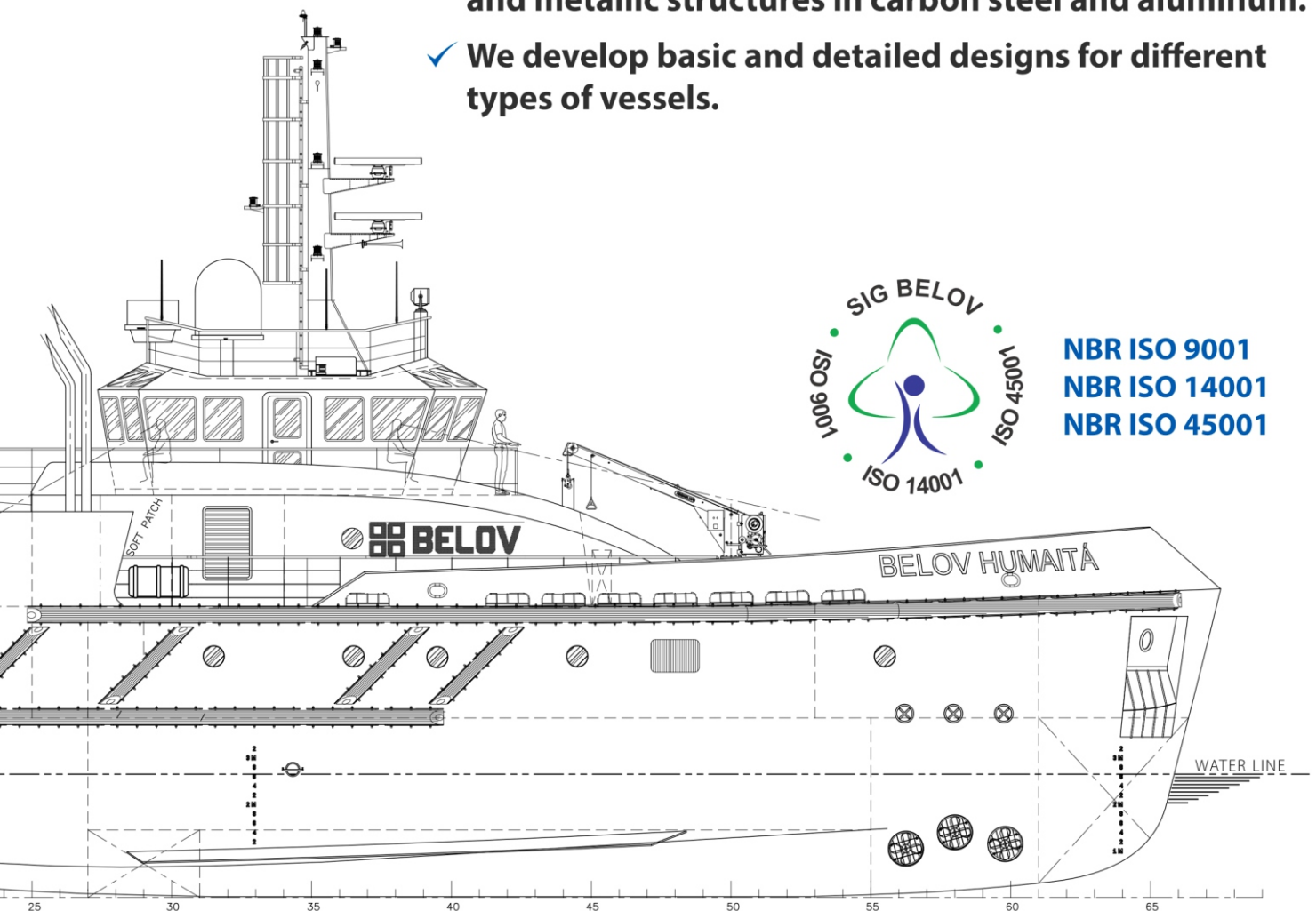
## Guidelines

Transparency and ethics, punctuality, quality, social-environmental sustainability, work safety, reliability and commercial competitiveness.

## Infrastructure

With environmental licensing up to date, our shipyard is located in the sheltered waters of Aratu Bay, Salvador-BA, and has 110 thousand m<sup>2</sup> of back area and the entire structure of covered warehouses, cargo lifting equipment and offices necessary for the needs and amenities of our customers.

- ✓ We have a floating dock for docking vessels up to 70m and 2200 tons.
- ✓ We have a current production capacity of 5000 tons/year for manufacturing and repairing vessels and metallic structures in carbon steel and aluminum.
- ✓ We develop basic and detailed designs for different types of vessels.



**NBR ISO 9001**  
**NBR ISO 14001**  
**NBR ISO 45001**



**For over 40 years, the BELOV group  
has operated with solidity and  
professionalism, serving its demanding  
market with excellence.**



**BELOV**  
INDUSTRIAL

**Belov Offshore Industrial Ltda**  
Túnel Street, Mapele, Simões Filho-BA, Brazil  
+55 71 3416.1970 | +55 71 3416.1900  
[www.belov.com.br](http://www.belov.com.br)